

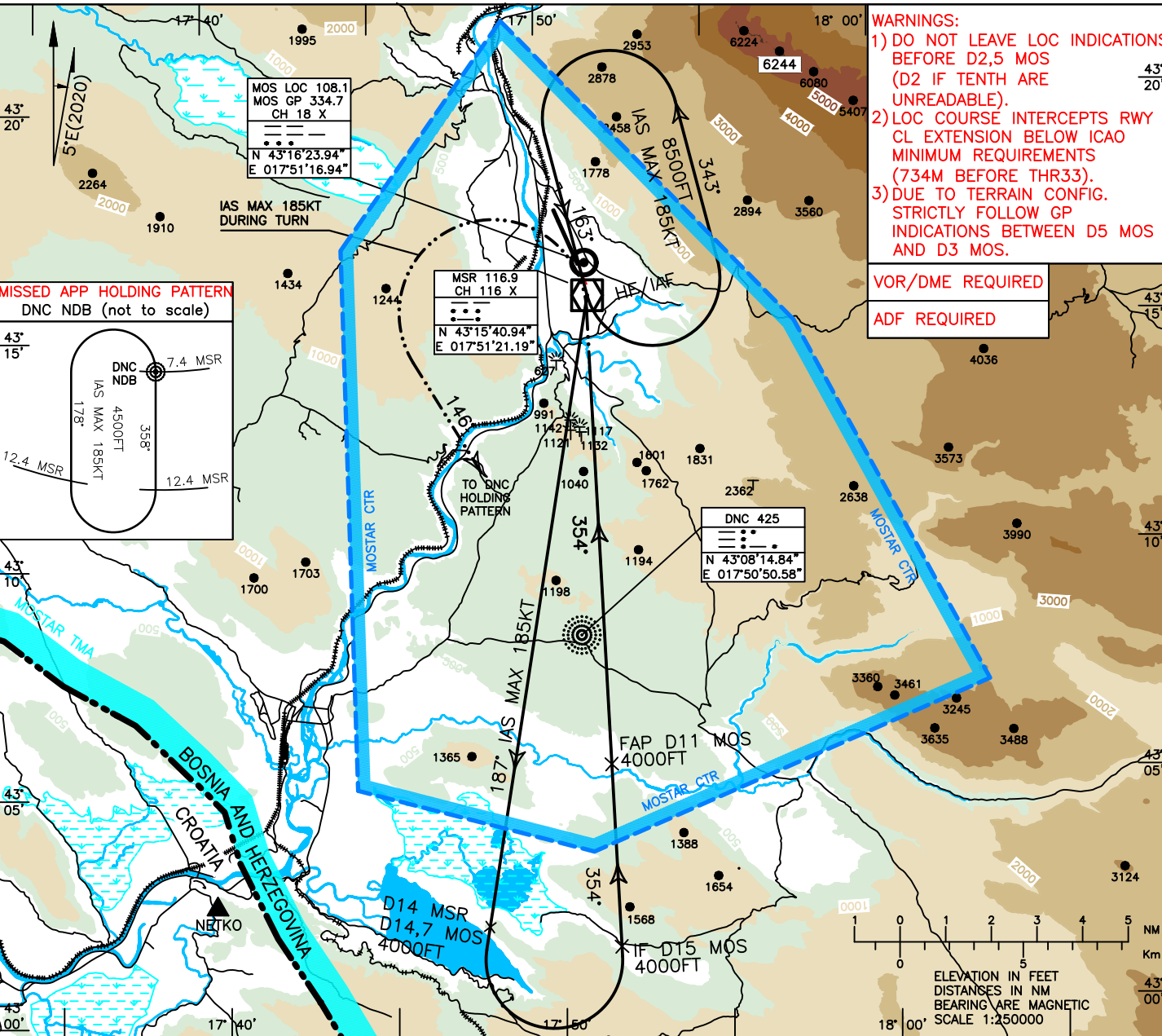
INSTRUMENT APPROACH CHART-ICAO

AD ELEV 174FT
HEIGHTS RELATED TO FICT. THR ELEV 154FT

TRANSITION ALTITUDE 10 000FT
VAR 5°E (2020)

APP 120.225
129.875
TWR 125.550
ATIS 126.225

MOSTAR (LQMO) IGS-X RWY33 SPECIAL PROCEDURE



WARNINGS:

- DO NOT LEAVE LOC INDICATIONS BEFORE D2,5 MOS (D2 IF TENTH ARE UNREADABLE).
- LOC COURSE INTERCEPTS RWY CL EXTENSION BELOW ICAO MINIMUM REQUIREMENTS (734M BEFORE THR33).
- DUE TO TERRAIN CONFIG. STRICTLY FOLLOW GP INDICATIONS BETWEEN D5 MOS AND D3 MOS.

VOR/DME REQUIRED
ADF REQUIRED

GP: 3,4'

MISSED APPROACH: MAINTAIN TRACK 354° CLIMBING TO 4500FT. AT D1 MOS DME TURN LEFT TO QDR 326° (TRACK 146°) DNC NDB TO ENTER DNC HOLDING PATTERN AT 4500FT. IAS MAX 185KT DURING TURN.

FOR A NEW APPROACH SEE REMARKS (**)

ELEVATIONS REFERRED TO FICT THR

MOS ILS (DME) ← (NM) FICT THR ELEV 154 MSR VOR/DME ← (NM)

8500FT 343° 163° 187° IAS MAX 185KT

*TO DNC HOLDING PATTERN AT 4500FT

MOS ILS/DME HF/IAF MSR VOR/DME DNC NDB

TP D1 MOS TO QDR 326° (TRACK 146°) DNC NDB

D14 MSR D14,7 MOS 4000FT FAP D11 (4000FT) IF (4000FT) D15 MOS

354° 354° 354° 361 ft/NM -5.9% -3.4° TERRAIN PROFILE

CAT.	IGS RWY33 OCA (H)		GS	FT PER MIN			MOS	DME	ALT (HGT)	REMARKS:	MSA 25NM MSR VOR/DME
	OCA (OCH)										
	MACG 2,5%		100	602	6	2320(2166)	1)	2)	3)	127 → 9400	
	MACG 4%		110	662	5	1959(1805)					
A	1961 (1807)	1279 (1125)	120	722	4	1598(1444)	** ENTERING ON INBOUND LEG OF DNC NDB HOLDING PATTERN RE-CAPTURE LOC COURSE AS SOON AS POSSIBLE AND DESCEND TO 3000FT BEFORE D8 MOS THEN FOLLOW NOMINAL FINAL APPROACH TRACK FOR LANDING. ATC CLEARANCE NEEDED.				
B	1971 (1817)	1289 (1135)	130	782	3	1237(1083)					
C	1984 (1830)	1302 (1148)	150	903	1	515(361)					
			160	963	0	154(0)					

CHG: MSA UPDATED;

THIS PAGE INENTIONALY LEFT BLANK